



*jordan fishwick*

Canterbury Place Chapel-En-Le-Frith High



## Canterbury Place Chapel-En-Le-Frith High Peak SK23 0UB

£295,000



### The Property

A delightful three-bedroom semi-detached home, ideally situated on the highly sought-after Canterbury Place development. Enjoying a desirable southerly aspect, this bright and spacious property offers flexible living accommodation and the convenience of off-road parking. The ground floor welcomes you with an entrance hall leading into a comfortable living area, perfect for relaxing or entertaining. To the rear, a bright and modern kitchen features French doors that open directly onto the garden. A separate utility room and a convenient downstairs WC complete the ground floor. Upstairs, the first floor hosts two generously sized double bedrooms, both benefitting from built-in wardrobes, alongside a third bedroom ideal for a nursery, home office, or guest room. A contemporary three-piece bathroom suite completes the accommodation. Externally, the property boasts a large, south-facing rear garden with a paved patio area, fully enclosed by timber fencing. To the front, off-road parking adds further practicality.




- Three Bedroom Semi-Detached Property
- Off-Road Parking
- Popular Development
- Close to Local Amenities
- Two Double Bedrooms with Built in Wardrobes
- Modern Fitted Kitchen
- Modern Bathroom Suite
- South Facing Garden

**Postcode** SK23 0UB

**EPC Rating**

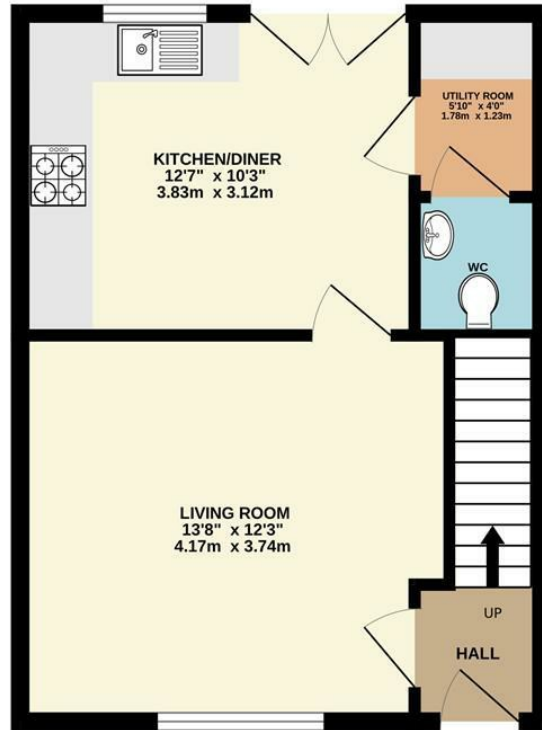
**Local Authority** High Peak

**Council Tax** C

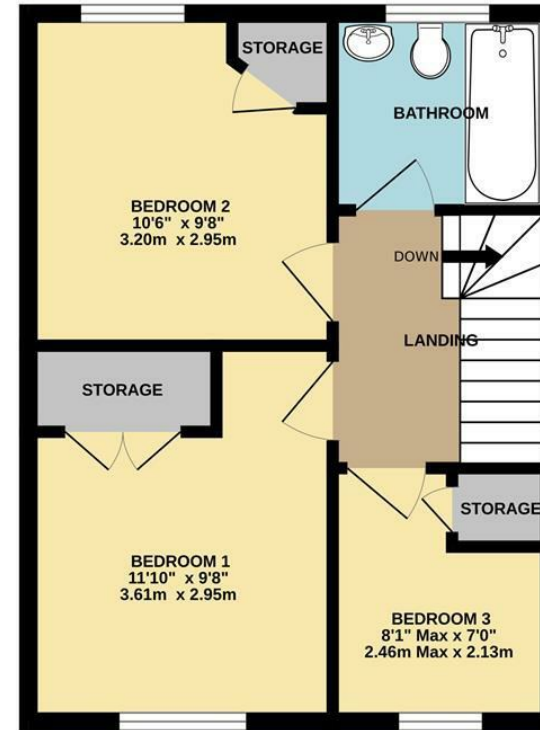
Energy Efficiency Rating		Current	Potential
Very energy efficient - lower running costs			
(92 plus)	A		
(81-91)	B		
(69-80)	C		
(55-68)	D		
(39-54)	E		
(21-38)	F		
(1-20)	G		
Not energy efficient - higher running costs			
<b>England &amp; Wales</b>		EU Directive 2002/91/EC 	



GROUND FLOOR



1ST FLOOR



Whilst every attempt has been made to ensure the accuracy of the floorplan contained here, measurements of doors, windows, rooms and any other items are approximate and no responsibility is taken for any error, omission or mis-statement. This plan is for illustrative purposes only and should be used as such by any prospective purchaser. The services, systems and appliances shown have not been tested and no guarantee as to their operability or efficiency can be given.  
 Made with Metropix ©2026



These particulars are believed to be accurate but they are not guaranteed and do not form a contract. Neither Jordan Fishwick nor the vendor or lessor accept any responsibility in respect of these particulars, which are not intended to be statements or representations of fact and any intending purchaser or lessee must satisfy himself by inspection or otherwise as to the correctness of each of the statements contained in these particulars. Any floorplans on this brochure are for illustrative purposes only and are not necessarily to scale.

Offices at: Chorlton, Didsbury, Disley, Hale, Glossop, Macclesfield, Manchester Deansgate, Manchester Whitworth Street, New Mills, Sale, Wilmslow and Withington

14 Market St, Disley, Cheshire, Stockport SK12 2AA

01663 767878

disley@jordanfishwick.co.uk

www.jordanfishwick.co.uk